

Spoooner Row, Sutton & Wattlefield  
Village Hall Association  
Newsletter

Issue 3

December 2000

Registered  
Charity No:  
304070

# Christmas Prize Bingo & Grand Christmas Draw

*Inside this issue:*

Christmas Bingo 1

Bingo News 2  
Fund Raising Update  
Village Hall Uplift  
Buses

Grant Awards Up- 3  
date  
Free Taster Sessions  
Late Night Shopping  
Line Dancing Christ-  
mas Party  
Next Edition

What We are About 4  
V/Hall Activities  
Committee Members  
Recycling  
A Word from the  
Chairman

## Stop Press!

Littens have offered  
their services in  
drawing up a Will.  
This is to be auctioned.  
Want to put in a bid?  
See insert for details.

Draw Prizes Include:  
Giant Talking Teddy      Giant Sylvester Cat  
A Meal For Two Voucher      Fish and chips voucher  
Fresh Chickens      Chocolates  
Various Drinks      Toiletries  
and Many More!

Eyes Down 8.00pm  
at  
Spoooner Row Village Hall  
Monday 11th Dec 2000

In aid of Village Hall funds

# Bingo News

Monday Night Bingo next year will commence on 8th January 2001. Would anyone like to help with the running of the bingo after Kath and Doug Reynolds retire ?

If so please contact Lesley on (01953) 601581

## Fund Raising Update

Two events have recently been held at the Village Hall to help raise funds for repairs and improvements:

### Queen Mother's 100th Birthday Tea Party

The Queen Mother's 100th birthday event held in August raised £98. Best decorated hat and cake competitions were organised and Wymondham Town Mayor, Joe Mooney judged and presented the prizes.



### Halloween Fayre

The Halloween Fayre held on Saturday 28th October raised £215. Thanks go to everyone who helped and supported the event, including Christine Herbert for the pumpkins, Ann Barnley for the basket of fruit, Stephanie Kemp for the cakes, everyone who donated prizes, and Kaye Peters for the Halloween flower arrangement. This was auctioned for £12 and the winning bid was made by Tracy Foster.

John Wood from Wymondham Development Partnership kindly presented the prizes.

Charlie & Joe Hawkins dressed for the event



### Village Hall Uplift

The Village Hall has had a facelift. Over the summer, volunteers have given their time and expertise to help repair and smarten up the outside of the

Hall. **Hamilton Acorn Ltd** from Attleborough donated two large boxes of paint brushes and rollers to help us on our way and Ann Barnley donated £100 towards the cost of the paint which was raised from crocheting.



### Buses



The "Flexi-Bus" service is now available. Zone 6 includes Spooner Row, Sutton and Wattlefield and runs from Monday to Friday to Wymondham Town Centre, but it can take you door to door if necessary. It is available from 10.15 to 11.30 and 13.00 to 14.00. Ring Olivers Taxis on (01953) 606011 giving 24 hours notice before you wish to travel. The Flexi-Bus can accommodate two wheelchairs.

Please use it or you will lose this valuable service

# Grant Awards Update:

## Millennium Festival Awards For All

The Village Hall Committee have been awarded a grant of £5000 under the "Millennium Festival Awards For All" programme for repairs to the Village Hall. This is the maximum amount awarded under this scheme. John Wood, Chairman of the Wymondham Development Partnership, presented the Committee with a certificate at the recent Halloween Fayre.



## Feasibility Study Grants:

John Wood presents the Grant Certificate to the Committee

The Village Hall Committee commissioned a Structural Survey on the Hall about a year ago and were subsequently required to carry out a Feasibility Study. Two successful grant applications were made to help with the Feasibility Study costs: Wymondham Town Council offered 50% and South Norfolk District Council offered 24%. All grant offers were gratefully accepted.

## FREE TASTER SESSIONS!

Everyone in Spooner Row and the surrounding area is invited to share their suggestions for FREE 'taster' sessions to learn new skills. Wherever possible the sessions will be held locally in Spooner Row. The new Wymondham Learning Initiative is a partnership of local organisations offering

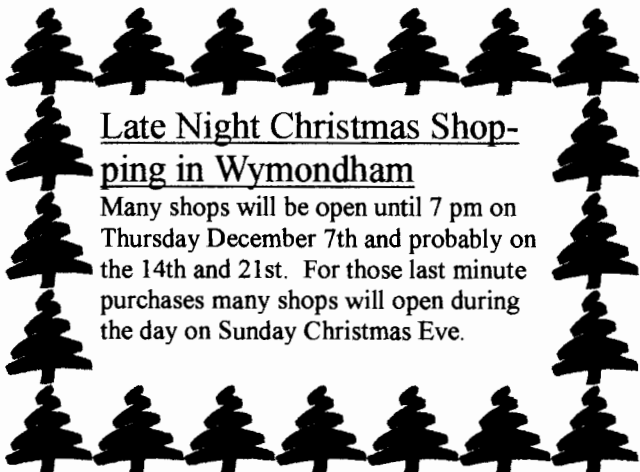
- ◆ An introduction to using a computer or the internet
- ◆ Practical skills such as First Aid or improving writing or maths
- ◆ The chance to try a new leisure interest such as art or creative writing.
- ◆ Plus anything else you would like to suggest!

Jane Bevan, the co-ordinator, is keen to hear your ideas

please ring her on 01603 215023 or write to her at

Wymondham Learning Initiative, NWTEC, St Andrew's House, Norwich NR2 4TP.

Please fill in and return the questionnaire attached to this Newsletter.



### Late Night Christmas Shopping in Wymondham

Many shops will be open until 7 pm on Thursday December 7th and probably on the 14th and 21st. For those last minute purchases many shops will open during the day on Sunday Christmas Eve.

### NEXT EDITION

If you would like to submit an article of local interest for the next edition of this Newsletter or if you are a local business and would like to advertise in the Newsletter contact the Secretary.

## Line Dancing Christmas Party



Phoenix Line Dancers (Spooner Row) are holding their Christmas party on **Tuesday 12th December at 7.00 pm** at The Village Hall. You are invited to join them whether you have danced before or not. Bring a friend for support, a plate of food and your favourite tippie. Western Dress is optional, there will be a raffle and entry is free.

The Group looks forward to you joining them for a night of line dancing fun.

## What We Are About:

*Spoooner Row, Sutton & Wattlefield Village Hall Association is a Charitable Trust registered with the Charity Commission. Its aim is to provide for physical and mental training and recreation, social, moral and intellectual development through the purposes of a village hall. Its finances are reliant on fund raising within the local community and hiring of the Hall.*

*For further information contact the Secretary.*

### **Committee Members:**

Acting Chair—P Frampton  
Vice-Chair—vacant  
Secretary—A. Peters  
Minutes Sec.-L. Partner  
Treasurer—L. Pittingale  
O Drapper  
K Dunn  
S Kelly  
R Ross  
Town Council Reps:  
P Hawkins, D Hockaday.

## **Recycling**

Do remember to recycle your used cans, bottles and paper at the Recycling Bank on Spooner Row recreation ground car park. All money raised is retained locally and will go towards amenities at Spooner Row Recreation Ground. Don't forget, the more we recycle locally the more funds the Recreation Ground Committee will have available for their use.

Spoooner Row, Sutton & Wattlefield Village Hall Assn.  
c/o The Secretary,  
Opus House, Bunwell Road  
Spoooner Row,  
Wymondham. Tel. (01953) 602768

**The Committee welcome all new residents in the Three Villages, why not come and join some of our activities:**

- Monday** 8 pm ♣ Cash Bingo  
♣ 150 Club Draw  
(2nd Monday each Month)
- Tuesday** 7- 9 pm ♣ Beginners Line Dancing
- Wednesday** 7- 9 pm ♣ Carpet Bowls
- Thursday** 2 - 4 pm ♣ Good Companions (Over 55's Club)
- Thursday** 7.45 pm ♣ Village Hall Committee Meetings  
(last Thursday each month)

*The Hall is available for private and club hire at very reasonable rates.*

*Contact Christine James on (01953) 603032*

## A Word From The Chairman

*Just a few words to thank the Committee and villagers who helped with the hard work carried out on the Village Hall over the Summer. I hope you enjoyed the events held at the Hall this year and look forward to your continuing support in 2007. Monies raised by these events will shortly be used to do work inside the Hall. We are at present establishing what work is required. You may have seen in the local paper that we were successful in obtaining a grant from the Millennium Fund. Watch this space for news on our progress.*

*Yours* Peter Frampton.

Individual articles may not represent the views of the whole Committee.