

# Spooner Row, Sutton & Wattlefield Village Hall Association Newsletter

Issue 1

January 2000

Registered  
Charity No:  
304070

## Inside this issue:

Village Hall— Present/Future	2
Christmas Bingo	2
Christmas Draw	2
Spooner Row Recreation Grnd	3
Notices	3
What We are About	4
Our Activities	4



Your Village Hall Needs  
YOU!

## 50th Anniversary

The Village Hall is celebrating it's 50th anniversary! Please come and join us in the Village Hall for a special meeting on January 27th at 7.45 pm followed by refreshments.



At this meeting the Committee will bring you up to date with Village Hall matters and explain to you why **The Village Hall May Have To Close**. The Committee will also tell you what can be done to prevent this happening. The Committee feel that it would be a great loss to the villages of Spooner Row, Sutton & Wattlefield if the Hall does close. The population of the villages is increasing and it seems sad that the support for one of the villages' few assets is dwindling.

## NEW MEMBERS NEEDED

Please help. We are organising a recruitment drive at our special meeting (see above) and are seeking new Committee members and volunteers (people who are willing to help with their skills and expertise without the commitment of being a Committee member.)

The Village Hall is in urgent need of repair. We need to raise funds from both grants and fund raising events in order to keep the village hall running.

## The Past

Originally a granary, the Hall was purchased for the villages on 31st December 1949. An old document that has recently come to light explains that the money was raised locally to provide a "N.A.A.F.I." style social centre for men returning home from the War. The feeling was that as men in the forces were used to having a social centre on tap, it was hoped that the new Village Hall would provide this. Over the years the Village Hall has been used for numerous school productions, Young Farmers Club rehearsals, Weekly Bingo sessions, Youth Club, W.I., Carpet Bowls, Good Companions, Gym Club, Boxing Club, Children's parties, Elections, Church Bazaars and fetes, Adult parties, craft fairs, Keep Fit, Public Meetings and much more.

We have had advice on claiming grant funding and there are several criteria we need to meet. Among them are:

- We must show that there is a need for the facility in the village.
- That there is support in the community for the Village Hall activities.
- That there is sufficient expertise among the Committee members to oversee the work.

So we need your active support or the Hall will close.

# Spoooner Row Recreation Ground

The Village Hall Committee recently handed back to Wymondham Town Council the management of Spooner Row playing field. This action was taken after seeking the advice of the Norfolk Association of Village Halls as the playing field was becoming increasingly expensive to manage. Its up-keep was reaching many hundreds of pounds each year and this was draining the charitable funds of the Village Hall.

The Village Hall Committee view the playing field as a valuable resource and believe this can be best served by the financial running made from Wymondham Town Council. Originally the playing field was bought by Wymondham Town Council's predecessor in the 1930's for the recreational use of the Spooner Row residents. A new management committee will be formed and they will be electing two representatives from Spooner Row on 27th January at 7pm.



Swinging into a new Millennium

## NOTICES

### JOB VACANCY

Unfortunately our caretaker of many years standing is retiring in the near future and we are seeking a replacement. This position will include looking after the Hall and taking bookings. Currently, the contract involves working 3 hours per week at £3.60 per hour. The hours may vary according to the bookings.

Please contact The Secretary.

### PARISH COUNCIL REVIEW

*The Council is undertaking a Parish Council Review within its District to include:*

- *The alteration of any boundaries of parishes.*
- *The formation of new parishes from two or more parishes or parts of parishes.*
- *The creation or abolition of Parish Councils.*

*Submit proposals to Alex Evans, Electoral Services Manager at South Norfolk Council no later than Monday 10th April 2000.*

*Parish  
Boundaries  
Under  
Review*



### ON THE BUSES

Once again the local bus is going to be cancelled. This, combined with the possible closure of the Post Office counter at the Three Boars will cause major problems for residents of Spooner Row. The elderly will be especially hard hit as pensions etc will now have to be collected from Wymondham. Trips to the doctors will also be difficult. We pay the same Council Tax as Wymondham residents but have limited public transport to use the facilities that we pay for.

The good news is that something is being done about it!

A meeting is being held on Wednesday 26th January 2000 at 7.00 pm at Wymondham Leisure Centre, to identify routes for a flexible bus service in this area.

If you need transport to get to the meeting, or if you are unable to attend and would like to register your support for the scheme in our villages, call Liz Rushmore, Norfolk County Council (01603) 223956.

Cars do break down, don't be left stranded.

### Spoooner Row Footpath

Just a word to let you know that the footpath issue has not been forgotten by the Council. A survey will soon be carried out on Station Road. It is believed that we are currently 30th on the list for a footpath and approximately only three new paths are made each year! Other alternatives which are being considered are pedestrian refuges along the road-side and traffic calming measures. What is your view?



**Let your voice be heard.  
Give them a ring.  
Wymondham Town Council (01953) 603302  
South Norfolk Council (01508) 533633  
Or put your points in writing.**

## The Present

The present condition of the Hall is giving the Committee some concern. A structural survey has recently been carried out and the conclusions of the report confirm the Committee's worst fears, but there is hope. Obviously general maintenance to the exterior of the building is fairly urgent and the floor in the main Hall will require replacing in the near future. The most urgent work required is the repair of the floor in the kitchen and behind the stage. This has had on-going problems and has been deteriorating over the years. We have funds for the maintenance work but will need to fund raise and apply for grants for the renovation and upgrading of the building.



Kath and Doug Reynolds have done it again! They have raised £338 on this year's Christmas Bingo and Raffle. They also organise the weekly Cash Bingo sessions on Monday evenings (eyes down 8.00 pm), which is one of our main sources of funding and continues to be popular. They also run the 150 Club giving you the chance to win a cash prize every month.

We would like to thank them for their hard work and their continuing support for the Hall and the other charities for which they raise funds - the Big C Appeal and East Anglian Children's Hospices to name but two.



## Christmas Draw



A grand total of £164 was raised from our Christmas Draw and thanks go out to all who have helped us by buying tickets and especially those who donated prizes particularly **Somerfield Wymondham, Geo. Reeve Wymondham and Van den Burgh Foods Sussex.**

Some of the lucky winners were:

C. Footer, C. Lord, L. Partner, L. Scott, J. Messant, R. Ross, S. Newby, B. Hope, I. Cushing, Pam P,

## The Future

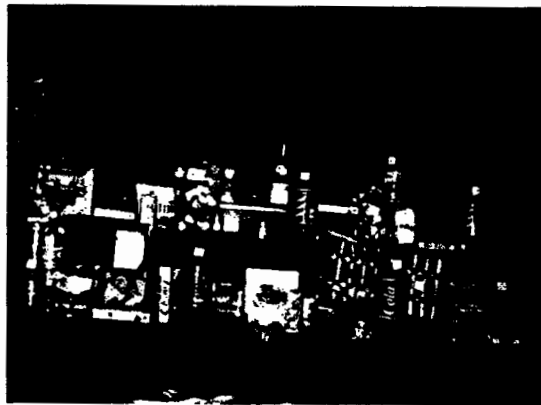
The future could be bright for the Village Hall, we have our Public Entertainment License until August 2000. The Committee are optimistic about the continuation of the Hall as a facility for our three Villages with your help. Without your support the Village Hall will close and the site will possibly be sold for development!

Please come to the meeting on January 27th at 7.45 pm in the Village Hall and show that you care about your community.



The future is in your hands!

## Christmas Bingo



A fine display of Christmas prizes prepared by Kath and Doug

*Thanks to Kath and Doug for their hard work and continued support for the Hall and other charities.*

## 150 Club Draw Reminder

The New Year is here and the 150 club entries are now due. This is your chance to win one of our monthly cash prizes. The first prize is £50, second prize £10 and two £5 prizes, plus the annual £100 Christmas Draw.

Numbers costs £1 per month payable to Kath Reynolds on (01953) 605996

The winner of the 150 Club Christmas £100 draw was Paula Browning.



## What We Are About:

Spooner Row, Sutton & Wattlefield  
Village Hall Assn.  
c/o The Secretary,  
The Owls, 13 School Lane,  
Spooner Row,  
Wymondham,  
NR18 9JP  
Tel. (01953) 601581



Could you contribute to our meetings?

### Committee Members:

Chair—Vacant  
Vice-Chair—J Richards  
Secretary—L Partner  
Treasurer—K Dunn  
A Barnley  
J Cole-Wilkin  
R Divey  
O Drapper  
S Kelly  
S Kemp  
R Ross  
J Turner  
*Town Council Reps:*  
P Hawkins  
D Hockaday



Wednesday evening  
Carpet Bowls

*Spooner Row, Sutton & Wattlefield Village Hall Association is a Charitable Trust registered with the Charity Commission. Its aim is to provide for physical and mental training and recreation, social, moral and intellectual development through purposes of a village hall. Its finances are reliant on fund raising within the local community and hiring of the Hall.*

*For further information contact the Secretary.*



### Come And Join Our Activities:

<b>Monday</b>	<b>8 pm</b>	<input type="checkbox"/> Cash Bingo
		<input type="checkbox"/> 150 Club Draw (2nd Monday each Month)
<b>Tuesday</b>	<b>7 - 9 pm</b>	<input type="checkbox"/> Beginners Line Dancing (First night 1st Feb)
<b>Wednesday</b>	<b>7 - 9 pm</b>	<input type="checkbox"/> Carpet Bowls
<b>Thursday</b>	<b>2 - 4 pm</b>	<input type="checkbox"/> Good Companions (Over 55's Club)
<b>Thursday</b>	<b>7.45 pm</b>	<input type="checkbox"/> Village Hall Committee Meetings (last Thursday each month)

*The Hall is available for private and club hire at very reasonable rates.*

Individual articles may not represent the views of the whole committee.